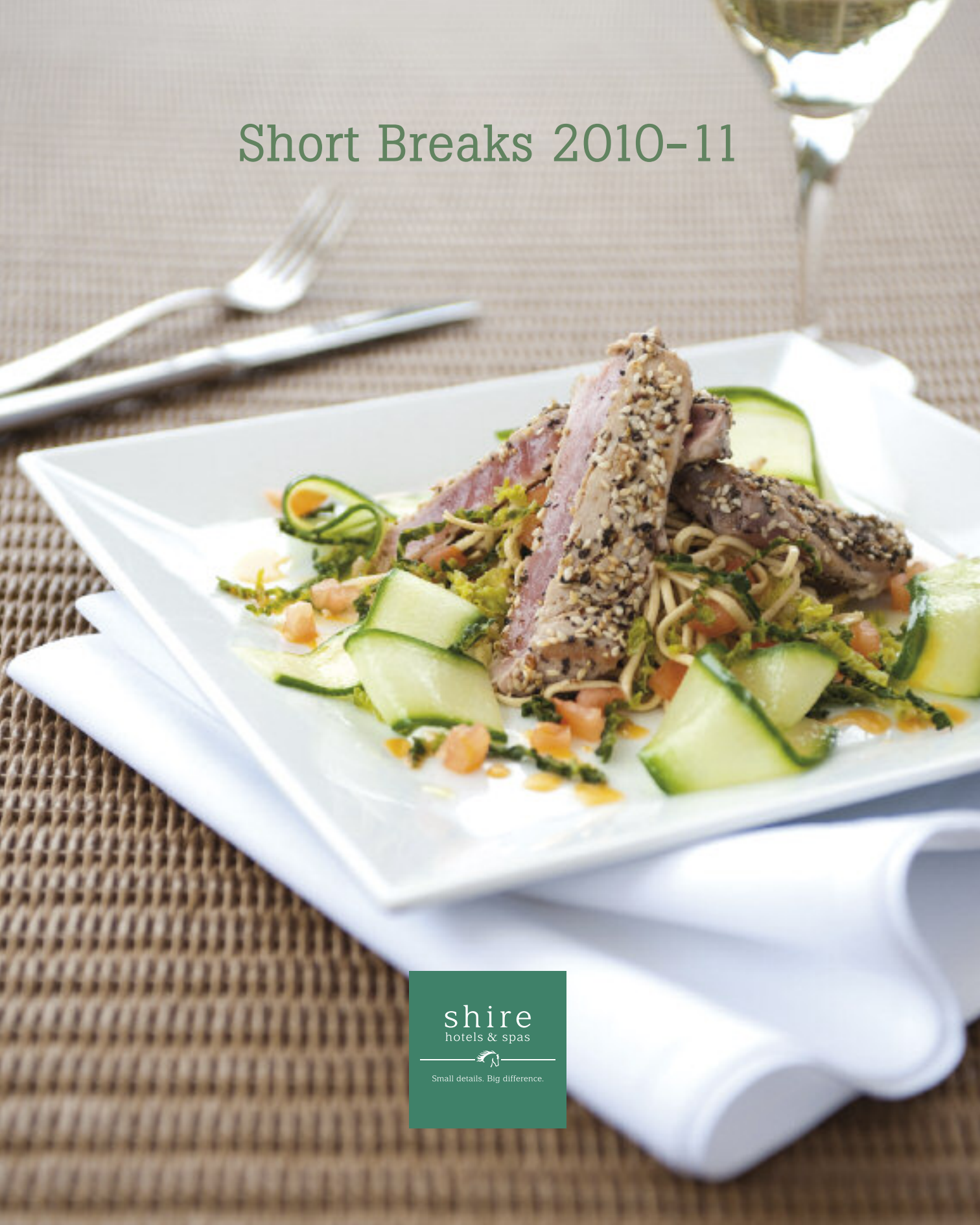


# Short Breaks 2010-11





## Welcome to Shire Hotels. Where small details make a difference.

A roaring log fire, generously stoked. Fresh milk in your guest room. Filtered water offered with our compliments when you dine. They're only small things, but we believe that it's the small details like this that turn your short break from 'good' to 'great'.

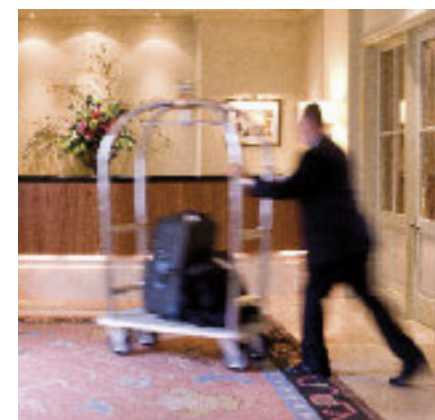
We think that taking a break in the UK has lots to offer. Forget long airport delays and the uncertainty of the Euro, with Shire Hotels you'll find that 4 star luxury and exceptional service are at the heart of everything we do. A warm welcome, stylish restaurants serving local and regional dishes with no hidden extras to catch you out and indulgent spas and treatment rooms to help recharge your batteries.

We're excited about the launch of 'The Suite Experience' - our very best suites offering exceptional comfort in refined surroundings with lots of thoughtful extras. Just perfect for a special celebration...more details are on page 11.

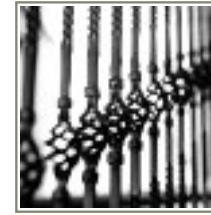
We hope that spending a few moments browsing here will inspire you to spend a little longer with us at one of our hotels, and we look forward to welcoming you soon.

Antony Spencer  
Managing Director

**LEFT**  
SPACE TO STRETCH YOUR STROKE. WE'VE MADE SURE ALL OUR POOLS ARE BIG ENOUGH TO ENJOY A PROPER SWIM.  
  
POOL, THORPE PARK, LEEDS



Experience real hospitality	5
Work on your wellbeing	7
Taste the Shire difference	9
The Suite Experience	11
North Lakes, Cumbria	12-13
Thorpe Park, Leeds	14-15
Cottons, Cheshire	16-17
Kettering Park, Northamptonshire	18-19
Aztec, Bristol	20-21
Solent, Hampshire	22-23
The Millstone, Lancashire	24-25
Book your short break	26



Our hotels are run by people who aren't just passing through. They're genuine professionals who've been with us for years, there to make your time with us all you want it to be.

It's our people who make the biggest difference to our guests' experience. And if that sounds like a cliché, just come and see for yourself.

It's the little things, like being able to make your reservation with someone who's at the hotel and knows the local area rather than with an impersonal call centre. The waiter remembering you prefer still to sparkling water with dinner and the housekeeper who tops up your fridge with fresh milk each day.

Nothing gives us greater pleasure than seeing our people develop from within. Relationships with local colleges, open days with schools and graduate training are all part of what we do. We've even established our own food and drink academy to give those with a passion for the industry an opportunity to hone their skills and gain a recognised qualification.

The fact is, at every Shire Hotel, everyone from the chef to the gardener takes supreme pride in everything they do. Some would call it being 'guest focused'. We just call it plain common sense.



**LEFT**  
DELIVERING EXCEPTIONAL SERVICE – THAT'S JUST STANDARD WHEN YOU STAY WITH US.

LANGBERRYS RESTAURANT  
KETTERING PARK,  
KETTERING





Whether you have the whole weekend, a half day or just half an hour, we're sure you'll make time to relax and recharge in a Shire Spa.

Your short break includes membership of our exclusive spa throughout your stay. The hard part is deciding whether to go for the burn or to simply indulge.

There's the latest in cardio and resistance equipment in the gym should you decide you need to work off the previous evening's pudding. Or sign up to an activity class - all inclusive, of course. Failing that, you could practice your breaststroke (our good-sized swimming pools are more akin to 'proper pools' than the puddles you find in some hotels).

You'll find luxurious treatment rooms and relaxation areas set in tranquil and peaceful surroundings, and a wide choice of treatments for both men and women. If you're looking for the ultimate in relaxation try one of our signature hot stones treatments - a couple of hours of pure bliss. Or when time is of the essence opt for an express - just 30 minutes and you'll feel renewed and refreshed.

Whatever you plump for, you can be sure your sense of wellbeing will be significantly higher when you leave us than when you arrived.



**LEFT**  
MAKE TIME TO DISSOLVE STRESS IN OUR SPA SUITE, THERE'S ENOUGH ROOM FOR TWO TO SHARE.  
  
SPA SUITE, SOLENT, FAREHAM





## When it comes to our food, we believe it's best not to go the extra mile for our ingredients.

By building long-term relationships, utilising expertise and knowledge, Mike Haddow, our Group Executive Chef, has championed regional producers for over 25 years and you'll see this influence throughout our menus.

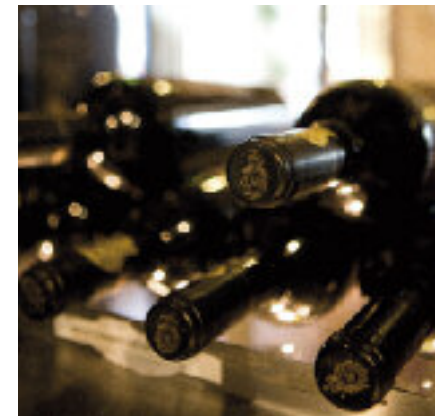
Our breakfast is one of the best in the business – as are the ingredients. You'll find premium fresh orange juice, prime back bacon and all of our breakfast eggs are free-range. All served with a cheery smile, fresh crisp white linen and endless pot of fine quality tea or coffee – good morning!

Enjoying a delicious dinner is all part of your short break experience. By choosing one of great value dinner, bed and breakfast breaks, you can relax knowing you have the full choice of the menu – and you'll be saving money too with no supplements or surcharge to worry about.

An advantage of being part of Daniel Thwaites plc, is that they also own James Pickup & Co., Wine and Spirit Merchants. Each hotel has a well-stocked cellar, personally selected from specialist vineyards across Europe and beyond. If you want to try something a little different, why not ask one of the team for a recommendation?

Why not time your visit to coincide with one of our ever-popular wine suppers? They're a great way to enjoy some superb wines and brush up on your knowledge. You'll find dates for all our events on [shirehotels.com](http://shirehotels.com)

**LEFT**  
FRESH PRODUCE AND A FRESH APPROACH. OUR CHEFS ARE STAUNCH ADVOCATES OF SEASONAL, LOCAL PRODUCE





### Suite dreams are made of these...designed to give you great style with a sense of space and service - everything you could possibly wish for

We understand there are times when only the very best will do. So our exclusive suites have been designed to offer you unadulterated style, ample space and luxurious surroundings.

Exquisitely appointed, our generous suites all offer king-size beds and a tranquil environment where privacy prevails amidst impeccable attention to detail and exceptional levels of personal service.

With a wealth of finishing touches, the emphasis is very much on providing you with a faultless unforgettable hotel experience.

These are simply the very best rooms in the house and because there's just a handful of them, you'll need to make your plans early. Reserve your Suite Experience with the hotel of your choice for a supplement of £35.00 per person per night.



**LEFT**  
IF A SOAK IN THE TUB ISN'T YOUR STYLE WHY NOT JUMP UNDER THE POWER SHOWER IN OUR PURPOSE BUILT WET ROOM  
  
SUITE, AZTEC, BRISTOL



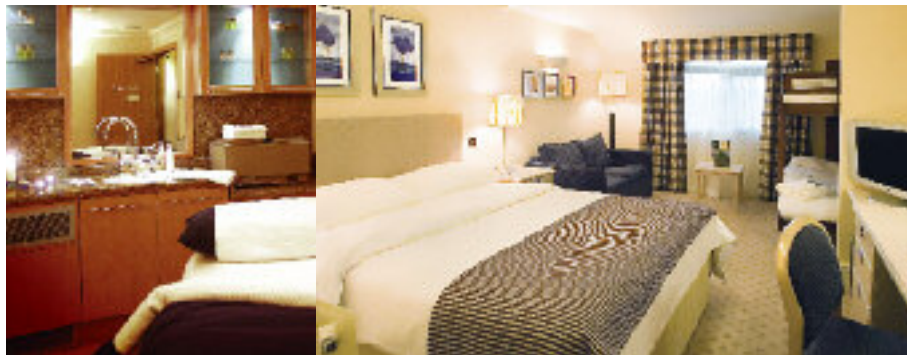
# North Lakes

a shire hotel & spa

★★★★ AA 80%

Ullswater Road Penrith Cumbria CA11 8QT  
 t: 01768 868111 e: nlakes.reservations@shirehotels.com General Manager: Antony Penny

Even if you're not a hardened hill walker, you can't fail to be stunned by the Lake District's scenery. It's such a great place for a short break – whether you're with the family, as a couple or with friends – because there's so much to do. Naturally, lovers of the great outdoors are well catered for. But so are those who prefer more sedate pleasures like lake cruises and sightseeing. If you're coming with kids, make sure you introduce them to The Trekkers Den – packed with plenty of games and activities to keep all ages occupied.



### You'll find all this and more...

Choose from a range of stylish guest rooms, including family rooms, suites and four posters

Dinner inclusive rates where you can eat from the entire menu with no supplements or surcharges

With an abundance of prize-winning local producers, the Martindale Restaurant menu and speciality Cumbrian hors d'oeuvres table give a flavour of the region

The Martindale Café and Terrace Lounge for drinks and all-day snacks

The Martindale Bar – a great place to enjoy a glass of wine or a pint of real ale

6 Spa Treatment rooms with Hydrotherm beds, ESPA product and treatment ranges plus relaxation lounge

13m pool, whirlpool, sauna, monsoon shower and poolside steam room

Activity and Wellness Studios with daily classes

Trekkers Den and children's splash pool

Fast-tan sunbed and St Tropez Spray Tan

Large fully equipped, air-conditioned gym

### Go explore

As England's largest national park – with 3500 kilometres of rights of way and 12 magnificent lakes – you can walk, cycle and splash about to your hearts content. Scale Scafell Pike – the highest mountain – or walk around Wastwater, the deepest lake – wherever you are you won't fail to be bowled over by the natural beauty of this unspoilt land. And although the weather is part of visiting the Lakes – there are plenty of under-cover attractions for all ages when a retreat from the elements is called for.



EXPLORE THE LAKES BY BUS, BOAT, BIKE OR BOOT - THE CHOICE IS YOURS

### Short break prices

#### Low Season

1st April – 27th June 2010 and  
 1st October 2010 – 31st March 2011

Room Type	Bed & Breakfast	Dinner, Bed & Breakfast
Classic Room	£70.00	£92.00
Family Room	£78.00	£100.00
Executive Room	£82.00	£104.00

#### High Season

28th June – 30th September 2010

Room Type	Bed & Breakfast	Dinner, Bed & Breakfast
Classic Room	£80.00	£102.00
Family Room	£88.00	£110.00
Executive Room	£92.00	£114.00

Rates per person per night based on two adults sharing on a minimum two night stay. Up to two children under 16 years stay free when sharing with parents – please refer to page 27 for details.

The Suite Experience - enjoy space, luxury and style in our very best guest rooms – see page 11 to find out more.

Supplement of £35.00 per person per night on the Classic room rate.

### Our best sellers

Rates based on two adults sharing a Classic Room

#### Stay-A-While Break

5 nights for the price of 4

Stay 5 nights Bed & Breakfast for the price of 4 and receive a bottle of Champagne on arrival.

**Low Season** £280.00 per person

**High Season** £320.00 per person

#### The Great Outdoors

Save up 10% or more when you're out and about enjoying the Lakes

Stay with us for 2 nights or more and you can benefit from our special rates with local attractions including pony trekking, mountain biking in Whinlatter or cruising on Ullswater.

Go online at [shirehotels.com](http://shirehotels.com) to find out more about local events and attractions to plan your stay.

# Thorpe Park



a shire hotel & spa

★★★★ AA 83%

1150 Century Way Thorpe Park Leeds LS15 8ZB

t: 0113 264 1000 e: thorpepark.reservations@shirehotels.com General Manager: Gordon Jackson

Leeds is one of the north's most cosmopolitan cities. Thorpe Park is just a stone's throw from the best it has to offer – great shopping, vibrant nightlife and nearby, Harrogate, York and The Dales beyond. But we'll forgive you if you don't venture too far. Thorpe Park's contemporary ambience, Spa, restaurant and bars make it the perfect place to chill as a couple or with friends.



### You'll find all this and more...

A range of luxuriously appointed, air-conditioned guest rooms, including suites and four posters

Dinner inclusive rates where you can eat from the entire menu with no supplements or surcharges

The Restaurant combines a contemporary atmosphere with the finest Yorkshire ingredients and a chef dedicated to producing inspirational modern dishes

The Outdoor Terrace, perfect for al fresco dining in warmer months

The Courtyard, with impressive glass atrium for drinks and all-day snacks

The Bar - elegant, chic, always welcoming

8 Spa Treatment rooms with Hydrotherm beds, ESPA product and treatment ranges plus relaxation lounge

13m pool, whirlpool and relaxation area

Colour therapy sauna, monsoon shower and fibre optic steam room

Activity Studio with a variety of daily classes

Large fully equipped, air-conditioned gym



WE BUY OUR SAUSAGES DIRECT FROM AN AWARD-WINNING YORKSHIRE BUTCHER



### Go explore

Culture vultures can head to nearby Castle Howard, Harewood House, The Royal Armouries or Henry Moore Sculpture Park.

If you fancy a spot of retail therapy, try Leeds' über-trendy Victoria Quarter. Or why not head for historic York, home to the Jorvik Viking Centre, The Shambles and National Railway Museum?



### Short break prices

1st April 2010 – 31st March 2011

Room Type	Bed & Breakfast	Dinner, Bed & Breakfast
Executive Room	£75.00	£97.00
Four Poster	£95.00	£117.00

Rates per person per night based on two adults sharing. Rates valid for one night weekend stays (minimum two night stay restriction may apply at peak weekends) and for minimum two night midweek stays.

The Suite Experience - enjoy space, luxury and style in our very best guest rooms – see page 11 to find out more.

Supplement of £35.00 per person per night on the Executive room rate.

Up to two children under 16 years stay free when sharing with parents. Plus at Easter, half term and Summer holiday periods children can stay free in their own room – just paying for meals as taken. Subject to availability.

### Our best sellers

Rates based on two adults sharing an Executive Room

#### Explorer Break

Two nights Bed and Breakfast with dinner included on one night.

**£279.00 per couple**

#### Retail Therapy Break

The perfect combination – shop 'til you drop in Leeds, then it's back to the hotel for an ESPA taster treatment. Includes dinner, bed & breakfast.

**£118.00 per person per night – Friday or Sunday**

**£123.00 per person per night – Saturday**

#### Get Together Weekends

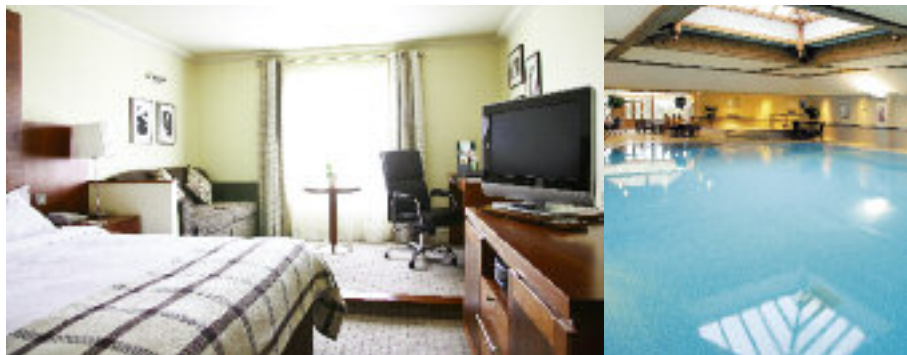
Whatever the reason – friends or family – get together for the weekend at Thorpe Park and we'll help plan the party with you. Group bookings for 3 rooms (6 people) or more save up to 15% on our short break rates. Just call Elaine Gregory, our Reservations Manager, to find out more and plan your get-together weekend.

Go online at shirehotels.com to find out more about local events and attractions to plan your stay.



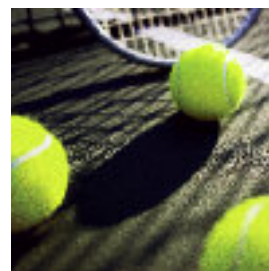
Manchester Road Knutsford Cheshire WA16 0SU  
 t: 01565 650333 e: cottons.reservations@shirehotels.com General Manager: Mark Bowers

The stylish Cheshire town of Knutsford feels miles from the urban bustle, which makes Cottons great for a relaxing 'eat, drink, and be pampered' break. Yet not too far away you'll find Manchester, Chester and Liverpool. So in between a dip in the giant outdoor hot tub and that first pre-dinner drink in the bar, you can head out to shop, explore, even have a flutter at the races. A great choice for couples and groups of friends.



**You'll find all this and more...**

- A range of stylish air-conditioned guest rooms, including suites and four posters
- Dinner inclusive rates where you can eat from the entire menu with no supplements or surcharges
- With Lancashire, Cheshire and Wales on the doorstep, Chef has a wealth of regional food heroes to turn to for the Magnolia Restaurant's signature dishes
- The Colonial Lounge and Cotton Club Bar for drinks and all-day snacks
- 7 Spa Treatment rooms with Hydrotherm beds, ESPA product and treatment ranges plus relaxation lounge
- 13m pool, whirlpool, outdoor terrace with large hot tub and relaxation area
- Colour therapy sauna, fibre optic steam room, fast-tan sunbed
- Activity Studio with daily classes
- Large fully equipped, air-conditioned gym
- 2 outdoor floodlit tennis courts



ANYONE FOR TENNIS?  
 ENJOY A GAME ON THE  
 OUTDOOR FLOODLIT  
 COURTS



**Go explore**

Natural beauty and rich heritage combined - Cheshire offers something to suit every mood and budget. Tatton Park, Arley, Norton Priory and Ness Botanic Gardens are favourites for the green-fingered visitors. Whilst vibrant cities of Manchester and Chester compete for the best boutiques, chic designer outlets and cosmopolitan eateries. And it's not all about the grown-ups - Chester Zoo, Blue Planet Aquarium and Go Ape - are all firm family favourites on the doorstep.

Short break prices 1st April 2010 – 31st March 2011		
Room Type	Bed & Breakfast	Dinner, Bed & Breakfast
Classic Room	£70.00	£92.00
Executive Room	£75.00	£97.00
Four Poster	£90.00	£112.00

Rates per person per night based on two adults sharing. Rates valid for one night weekend stays (minimum two night stay restriction may apply at peak weekends) and for minimum two night midweek stays.

**The Suite Experience** - enjoy space, luxury and style in our very best guest rooms - see page 11 to find out more.  
 Supplement of £35.00 per person per night on the Classic room rate.

**Our best sellers**  
 Rates based on two adults sharing a Classic Room

**Explorer Break**  
 Two nights Bed & Breakfast with dinner on one night.  
**£279.00 per couple**

**One Night Weekend Spa Break**  
 One night Dinner, Bed & Breakfast including a half-hour ESPA taster treatment.  
**£115.00 per person per night**

**Get Together Weekends**  
 Whatever the reason - friends or family - get together for the weekend at Cottons and we'll help plan the party with you. Group bookings for 3 rooms (6 people) or more save 15% on our short break rates. Just call Karen Isom, our Reservations Manager, to find out more and plan your get-together weekend.

Go online at [shirehotels.com](http://shirehotels.com) to find out more about local events and attractions to plan your stay.

Up to two children under 16 years stay free when sharing with parents. Plus at Easter, half term and Summer holiday periods if you stay for a minimum of 2 nights, children can stay free in their own room - just paying for meals as taken. Subject to availability.

# Kettering Park



Kettering Parkway Kettering Northamptonshire NN15 6XT  
 t: 01536 416666 e: kpark.reservations@shirehotels.com General Manager: Mark Henderson

A stay at Kettering Park is the perfect opportunity to discover the great outdoors. There are countless family attractions and activities to enjoy like Wicksteed Fun Park and Althorp House, and miles of child-friendly cycle ways on your doorstep. Or you could spend the day wandering round historic Cambridge, only a short drive away. Of course, if the good old English weather prevents you straying too far, there's plenty to keep everyone occupied within the hotel too.

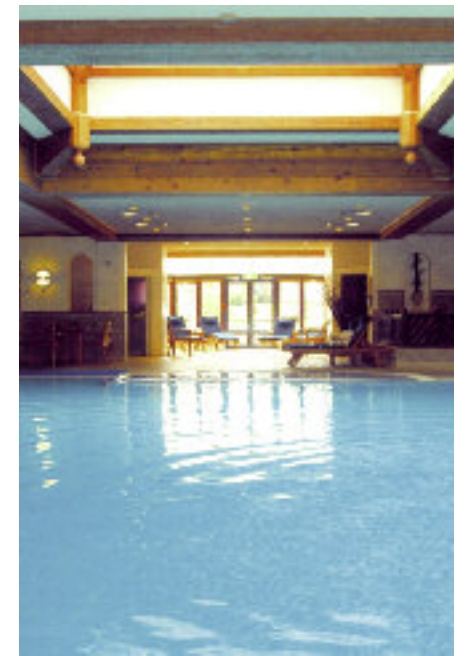


## You'll find all this and more...

- A choice of luxuriously appointed, air-conditioned guest rooms, including interconnecting and family rooms
- Dinner inclusive rates where you can eat from the entire menu with no supplements or surcharges
- Taste fresh, locally sourced food from the heart of England's countryside in the welcoming atmosphere of Langberrys Restaurant Bar & Lounge
- Al fresco dining on the terrace
- Spa with 13m pool, whirlpool and relaxation area
- Colour therapy sauna, fibre optic steam room and fast tan sunbed
- Children's splash pool
- Activity Studio with daily classes
- Large fully equipped, air-conditioned gym
- NEW FOR 2010** - Choice of Spa Treatments



ENJOY THE EXTRA SPACE - CHILDREN STAY FREE IN THEIR OWN ROOM



## Go explore

Underneath the surface of this quintessentially English county, there's a whole host of things to do and see. An abundance of stately homes and houses – including Althorp, Boughton House and Rockingham Castle. It's easy to enjoy the great outdoors too – on foot or cycle – with a great network of footpaths, bridleways and towpaths and areas of natural beauty, with no less than five country parks in the county and the majestic Rockingham Forest. And for the daredevils looking for action and adventure – learn to fly at Sywell, skydive at Hinton, drive a tank in Helmdon or white water raft in Nene.

Ask about our discounted tickets for a wide range of attractions in the county and visit the website to find out more about our legendary tribute nights and events.

### Short break prices

1st April 2010 – 31st March 2011

Room Type	Bed & Breakfast	Dinner, Bed & Breakfast
Executive Room	£72.50	£94.50
Four Poster	£92.50	£114.50

Rates per person per night based on two adults sharing. Rates valid for one night weekend stays and for minimum two night midweek stays based on two people sharing.

The Suite Experience - enjoy space, luxury and style in our very best guest rooms – see page 11 to find out more.

Supplement of £35.00 per person per night on the Executive room rate.

Children stay free in their own room – just paying for meals as taken. Subject to availability and 2 night minimum stay.

### Our best sellers

Rates based on two adults sharing an Executive Room

#### Refresher Break

Stay two nights at the weekend Bed & Breakfast or Dinner, Bed & Breakfast. **£125.00 per room per night Bed & Breakfast or £160.00 per room per night Dinner, Bed & Breakfast**

#### Champagne Break

Something to celebrate – make it a mini-break. Stay one night dinner, bed and breakfast with a bottle of chilled Champagne in your room. **£99.00 per person**

#### Get Together Weekends

Whatever the reason – friends or family – get together for the weekend at Kettering and we'll help plan the party with you. Group bookings for 3 rooms (6 people) or more save 15% on our short break rates. Just call Jo Steward, our Reservations Manager, to find out more and plan your get-together weekend.

Go online at [shirehotels.com](http://shirehotels.com) to find out more about local events and attractions to plan your stay.



Aztec West Almondsbury Bristol BS32 4TS  
 t: 01454 201090 e: aztec.reservations@shirehotels.com General Manager: Chris Hill

Guests who stay at the Aztec often describe it as a 'great all-rounder'. If you want to get out and about, there's plenty to see and do and lots of spectacular events throughout the year – Bristol, Cardiff and Bath are all within easy striking distance. And if you don't, well, there's plenty to keep everyone occupied indoors. With great Spa facilities, free children's rooms and informal dining options, the Aztec's a great place for families too.



**You'll find all this and more...**

- A choice of luxuriously appointed, air-conditioned guest rooms, including suites, family and interconnecting rooms
- Lakeside rooms with mini balcony or patio - ideal for the summer months
- Dinner inclusive rates where you can eat from the entire menu with no supplements or surcharges
- Quarter Jacks Restaurant, Bar and Lounge showcases the regions finest produce throughout the menu and on the speciality hors d'oeuvres table
- Al fresco dining on the outdoor terrace in warmer months
- 13m pool, whirlpool and relaxation area – plus a children's splash pool
- Steam room, colour therapy sauna and monsoon shower
- Activity Studio with a range of daily classes
- Fast-tan sunbed
- Large fully equipped, air-conditioned gym
- Choice of Spa Treatments



ENJOY THE EXTRA SPACE - CHILDREN STAY FREE IN THEIR OWN ROOM



**Go explore**

Rediscover Bristol – it's a city that's changed beyond recognition in the past couple of years. Visit The Cabot Circus shopping and leisure quarter, enjoy the character and heritage of the harbourside or stroll in the elegant and leafy Clifton. It's officially the greenest and most environmentally friendly city in Britain, bursting with events and festivals throughout the year from balloon spectaculars to waterfront regattas, food festivals, concerts and carnivals. One visit just isn't enough to do this wonderful city justice.

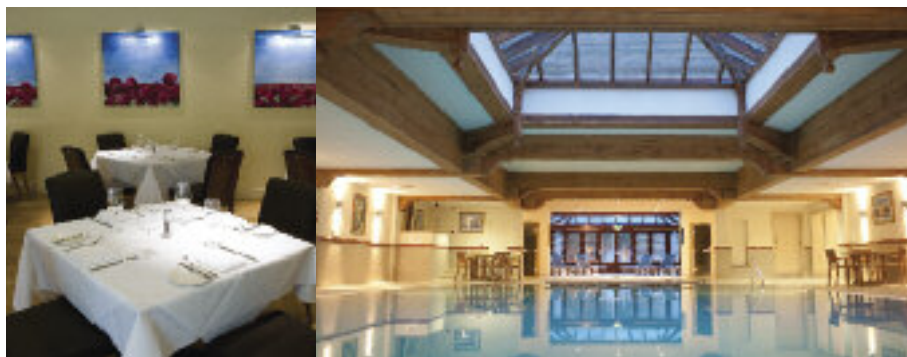
Discounted tickets are available to guests for many attractions.

<p><b>Short break prices</b> 1st April 2010 – 31st March 2011</p> <table border="1" style="width: 100%; border-collapse: collapse;"> <thead> <tr> <th style="text-align: left;">Room Type</th> <th style="text-align: center;">Bed &amp; Breakfast</th> <th style="text-align: center;">Dinner, Bed &amp; Breakfast</th> </tr> </thead> <tbody> <tr> <td>Executive Room</td> <td style="text-align: center;">£72.50</td> <td style="text-align: center;">£94.50</td> </tr> <tr> <td>Lakeside Room</td> <td style="text-align: center;">£97.50</td> <td style="text-align: center;">£119.50</td> </tr> </tbody> </table> <p>Rates per person per night based on two adults sharing. Rates valid for one night weekend stays and for minimum two night midweek stays.</p> <div style="border: 1px solid gray; padding: 5px; margin-top: 10px;"> <p>The Suite Experience - enjoy space, luxury and style in our very best guest rooms – see page 11 to find out more.</p> <p>Supplement of £35.00 per person per night on the Executive room rate.</p> </div> <div style="border: 1px solid gray; padding: 5px; margin-top: 10px;"> <p>Children can stay free in their own room – just paying for meals as taken. Subject to availability and 2 night minimum stay.</p> </div>	Room Type	Bed & Breakfast	Dinner, Bed & Breakfast	Executive Room	£72.50	£94.50	Lakeside Room	£97.50	£119.50	<p><b>Our best sellers</b> Rates based on two adults sharing an Executive Room</p> <p><b>Refresher Break</b> Stay two nights at the weekend Bed &amp; Breakfast or Dinner, Bed &amp; Breakfast.  <b>£125.00 per room per night Bed &amp; Breakfast</b>  <b>or £160.00 per room per night Dinner, Bed &amp; Breakfast</b></p> <p><b>Champagne Break</b> Something to celebrate – make it a mini-break. Stay one night dinner, bed &amp; breakfast with a bottle of chilled Champagne in your room.  <b>£99.00 per person</b></p> <p><b>Get Together Weekends</b> Whatever the reason – friends or family – get together for the weekend at the Aztec and we'll help plan the party with you. Group bookings for 3 rooms (6 people) or more save 15% on our short break rates. Just call Nikki Gwatkin, our Reservations Manager, to find out more and plan your get-together weekend.</p> <p style="text-align: center;">Go online at <a href="http://shirehotels.com">shirehotels.com</a> to find out more about local events and attractions to plan your stay.</p>
Room Type	Bed & Breakfast	Dinner, Bed & Breakfast								
Executive Room	£72.50	£94.50								
Lakeside Room	£97.50	£119.50								



Rookery Avenue Whiteley Fareham Hampshire PO15 7AJ  
 t: 01489 880000 e: solent.reservations@shirehotels.com General Manager: Dominic Osborne

Whether you love getting out and about by the coast with the family, or want to enjoy a lazy weekend of Spa treatments and good food with friends, the Solent is sure to fit the bill. It's nestled in mature woods and ancient meadowland, so when you're there you feel like you're miles from anywhere. Yet it's perfectly located between the coastal cities of Southampton and Portsmouth. Will it be sailing, country walks, maritime history and sightseeing or a few days of pure indulgence? You can enjoy the best of both worlds at the Solent.



You'll find all this and more...

A range of luxuriously appointed, air-conditioned guest rooms, including family rooms, suites and four posters

Dinner inclusive rates where you can eat from the entire menu with no supplements or surcharges

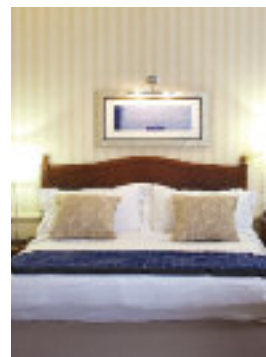
Locally reared meats and freshly caught seafood feature at The Terrace Restaurant. Go Mediterranean in the summer months and dine al fresco for breakfast, lunch and dinner

The Parson's Collar country pub for home-cooked meals and traditionally brewed Thwaites beers

8 Spa Treatment rooms with Hydrotherm beds, ESPA product and treatment ranges plus relaxation lounge and our exclusive Spa Suite for two with private terrace and outdoor hot tub

13m pool, whirlpool and relaxation area – plus children's splash pool

Large fully equipped, air-conditioned gym, Activity Studio and floodlit tennis court



ENJOY OUTDOOR LIVING. BREAKFAST, LUNCH AND DINNER SERVED AL FRESCO THROUGHOUT THE SUMMER



Go explore

There's plenty to see and do in and around the hotel itself. But should you wish to spread your wings, what about a trip to see the New



Forest's wild ponies, or a visit to Portsmouth, the Historic Dockyard and Spinnaker Tower? There's the races at Glorious Goodwood. Or why not take the ferry to the Isle of Wight for a day?



Short break prices

Low Season

1st April – 27th June 2010 and 1st October 2010 – 31st March 2011

Room Type	Bed & Breakfast	Dinner, Bed & Breakfast
Executive Room	£70.00	£92.00
Four Poster	£85.00	£107.00
Junior Suite	£92.50	£114.50

High Season

28th June – 30th September 2010

Room Type	Bed & Breakfast	Dinner, Bed & Breakfast
Executive Room	£80.00	£102.00
Four Poster	£95.00	£117.00
Junior Suite	£102.50	£124.50

Rates per person per night based on two adults sharing on a minimum two night stay. Rates valid for minimum two night midweek and weekend stays based on two people sharing. Up to two children under 16 years stay free when sharing with parents – please refer to page 27 for details.

The Suite Experience - enjoy space, luxury and style in our very best guest rooms – see page 11 to find out more. Supplement of £35.00 per person per night on the Executive room rate.

Our best sellers

Rates based on two adults sharing an Executive Room

Stay-A-While Break

4 nights for the price of 3

Stay 4 nights Bed & Breakfast for the price of 3 and receive a bottle of Champagne on arrival.

Low Season	from £210.00 per person
High Season	from £240.00 per person

One Night Weekend Spa Break

One night Dinner, Bed & Breakfast including a half-hour ESPA taster treatment - available Friday or Sunday night only.

Low Season	£115.00 per person per night
High Season	£125.00 per person per night

Get Together Weekends

Whatever the reason – friends or family – get together for the weekend at the Solent and we'll help plan the party with you. Group bookings for 3 rooms (6 people) or more save 15% on our short break rates. Just call Rachel Craig, our Reservations Manager, to find out more and plan your get-together weekend.

# The Millstone at Mellor



Church Lane Mellor Blackburn Lancashire BB2 7JR  
 t: 01254 813333 e: info@millstonehotel.co.uk Chef Patron: Anson Bolton

Working out or taking a dip not high on your agenda? Prefer a leisurely stroll in the countryside? Well The Millstone is the perfect place for you. It's one of the highest rated AA 2-star hotels in the country and many guests return time and again to unwind, enjoy outstanding hospitality, great food and fine wines. Chef Patron, Anson Bolton, is a big champion of fresh, locally sourced produce, so daily specials feature alongside seasonal menus. This award-winning 'restaurant with rooms' really is our little treasure.



## Relaxing at The Millstone...

We're known as the 'baby' of the Shire family but there's nothing small about our ambitions

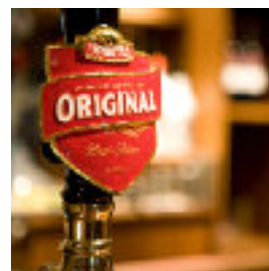
Individually appointed guest rooms decorated and furnished with charm and character

Dinner inclusive rates where you can eat from the entire menu with no supplements or surcharges

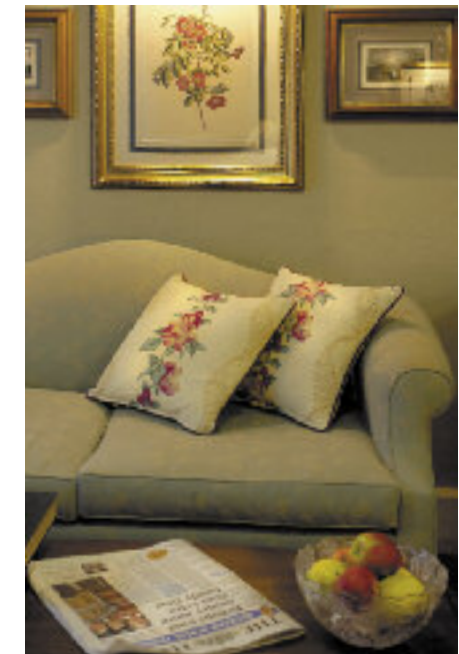
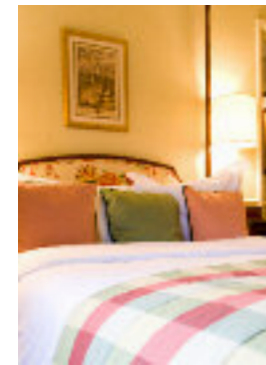
Millers Bar and Restaurant – a real favourite with locals and guests alike, make your choices from an award-winning menu full of classic dishes with a Lancashire twist

Enjoy a perfect afternoon in the resident's lounge – put your feet up and enjoy a pot of tea with the papers

Take a stroll around the picturesque village of Mellor



THE BEST BAR NONE -  
 DRAUGHT BEER AT ALL  
 PROPERTIES, SUPPLIED BY  
 OUR PARENT COMPANY,  
 DANIEL THWAITES



## Go explore

Surround yourself with the natural beauty of The Ribble Valley, or discover Tolkien's inspiration in The Forest of Bowland. Head

into Blackburn and catch a show at the King Georges Hall. Discover one of the world's best collections of Tiffany Glass at the Haworth Art Gallery. Bird watchers and nature lovers can spend many happy hours following the River Ribble through salt marshes, wetlands and mudflats.

## Meet the Brewer

Being part of a family company with a 200 year heritage gives us unique access to some of the finest 'brewing' brains in the UK. And we're delighted to be able to give you an opportunity to gain a very personal insight in to the world of Daniel Thwaites at our 'Meet the Brewer' weekends hosted at The Millstone.

Numbers are strictly limited at this intimate events, where you'll be able to visit the brewery for private guided tour, sample our award-winning range of traditional beers and enjoy an educational afternoon with Ian Bearpark, one of the Brewery Directors, and his team. As it's the Millstone, no visit would be complete without some delicious food prepared including a dinner matched with carefully selected ales for each course.

You'll find full information at [millstonehotel.co.uk](http://millstonehotel.co.uk) or call us on 01254 813333 to make your booking.

2010 confirmed dates - 21/22nd May and 15th/16th October - £87.50 per person per night based on 2 sharing and a 2 night stay including dinner, bed and breakfast.



## Short break prices

1st April 2010 – 31st March 2011

Room Type	Bed & Breakfast	Dinner, Bed & Breakfast
County Room	£49.50	£76.00
Four Poster	£59.50	£86.00
Suite	£64.50	£91.00

Rates per person per night based on two adults sharing. Rates valid for one night weekend stays (minimum two night stay restriction may apply at peak weekends) and for minimum two night midweek stays based on two people sharing. Please refer to page 27 for further pricing information.

## Our best sellers

Rates based on two adults sharing a County Room

## Sunday Stopover

The ideal overnight break for wedding and party guests to help recover from the night before or just a great value, little pick-me-up for couples and friends at the end of a long, hard week – available Sunday night only. Includes early check in, basket of treats on arrival and Sunday Roast dinner with wine.

£69.50 per person

Go online at [shirehotels.com](http://shirehotels.com) to find out more about local events and attractions to plan your stay.

## Booking your break

### Talk to the hotel, not a call centre

Before you book your break, you'll probably have all sorts of questions you'd like answers to. That's why when you call our Reservations Teams you'll be speaking to someone based at the hotel, not a central call centre. So you can find out everything you need to know about the hotel and the local area before you make your reservation.

Of course, if you prefer to book online just visit [shirehotels.com](http://shirehotels.com)

### Best rates guarantee

There's nothing worse than seeing the same short break for less after you've booked. For that reason, we offer a 'Best Rates Guarantee' to give you peace of mind.

### No hidden extras

We think it's best to give you one price that includes everything rather than an attention-grabbing rate that doesn't include breakfast, dinner supplements, use of the Spa, parking etc etc. We hope you'll agree.

## shirehotels.com

There's only so much information we can fit into a brochure. But if you visit [shirehotels.com](http://shirehotels.com) you can...

- Access more detailed hotel information
- View high-quality photos of the hotels and guestrooms
- Plan your route from home to the hotel and print a map and driving directions
- Read all about the local attractions – many with specially negotiated entry rates for you
- Find out what's on around and about during your stay
- View hotel menus and wine lists

## Any questions?

### How do I book and pay for my short break?

You'll need to secure your booking with a credit or debit card. However, unlike many other hotels, no deposit or payment will be taken before you arrive at the hotel. The full price of your break including extras should be settled in full when you check-out.

If you want to pay by cash, cheque or debit card, you'll need to pay for your break in full at check-in and settle any extras as you incur them (or leave an additional deposit of £50.00 per night to cover any extras – this will be refunded when you check-out if it's not been used).

For Spa Breaks, Advance purchase breaks, Christmas and New Year bookings, deposit and payment terms vary.

### What's included in the brochure price?

Prices quoted in this brochure are based on two people sharing a twin or double room for a one night stay (certain prices are based on a minimum two night stay and this is specified, where appropriate). Those hotels with a minimum two night stay restriction may offer one night weekend stays (subject to availability) for which a £25.00 per person supplement is charged. Please call the hotel of your choice for more information.

Prices include service and VAT at current rate, breakfast and, where stated, three course à la carte dinner. Our Best Sellers rates are subject to availability and cannot be used in conjunction with any other offer or promotion.

### Are these prices available all year round?

They're available for midweek (Monday – Thursday) and weekend (Friday – Sunday) breaks all year round. At certain times of the year, such as Bank Holidays, Christmas, New Year and Easter, other rates may apply. Please call the hotel of your choice for details or visit [shirehotels.com](http://shirehotels.com). As these short break rates represent a discount on normal hotel rates, each hotel will hold an allocation of rooms at these rates and once sold you may be offered accommodation at another rate.

### What if I'm staying on my own?

Although we don't have any single rooms, you can enjoy a double or twin room on your own, by paying a single supplement of just £25.00 per night on a weekend night. Unfortunately we can't extend this rate to midweek nights, and therefore normal midweek sole occupancy rates apply.

### What if I need to cancel my booking?

If your plans need to change, we'll understand. Just let us know 24 hours before 2pm of the day of your arrival, and there'll be no charge. Cancellations after this time will incur a charge of the first night's Bed and Breakfast.

Different cancellation terms may apply at peak times like Easter, Christmas and New Year. You'll be advised of these when you book.

### Do I need to pay for car parking?

No, it's free for all our short break guests and there's plenty of it at all our hotels.

### What time can I check in and out of my room?

Your room will normally be available from 2pm on the day of arrival. If you'll be arriving earlier than this, please let us know and we'll do our best to have your accommodation ready. Check out is 11am – but if you want to stay in your room until after lunch, please let us know in advance and we'll do our best to oblige.

### What do I pay for children?

Many of the hotels offer family rooms, with bunks and/or extra beds so you can all stay together. Children aged up to 16 years can stay free of charge in your room and you just pay for their breakfast.

### Breakfast charges for children:

Under 4 years	Free
4 – 10 years	£4 per child per night
11 – 16 years	£8 per child per night

All other children's meals will be charged as taken. Cots and highchairs are available at all hotels free of charge.

The number and age of children that can be accommodated in their parent's room does vary between hotels so please check at time of booking.

If you want children to be in their own interconnecting or adjacent room, the charge is £25.00 per child per night (including breakfast) based on a minimum of two children under 16 years sharing the room. At North Lakes and Solent, the charge is £40.00 per child per night. Children's rooms are subject to rate availability and may not be available during Bank Holidays and other peak periods – please check when you book.

Where offered, free children's rooms are provided on a room only basis – all children's meals (including breakfast) will be charged as taken. Free children's rooms are limited to one free room per paid room and are strictly subject to each hotel's allocation and discretion.

### What eating options are there for our children?

Children's meals are served in all our hotels. To keep a relaxed and enjoyable atmosphere for all our guests we ask that families with under 12's dine in the restaurant before 8pm.

Children can eat either from the children's Trekkers menu or choose half portions from the à la carte menu and pay half price.

### What about a babysitter?

We've teamed up with Safehands – Britain's leading childcare organisation – to offer professional babysitting services whilst you're at the hotel. Call **Safehands** direct on **0870 844 6688** to pre-book this service.

### Can I bring my dog?

Working guide and other assistance dogs are welcome at all our hotels. Please let us know in advance so we can allocate a room that will be suitable for your canine companion. Although we don't accept pets, we can recommend a local kennel.

### Any more questions?

Call the hotel of your choice and speak to one of the **Reservations Team**, visit [shirehotels.com](http://shirehotels.com), email us on [info@shirehotels.com](mailto:info@shirehotels.com) or call **0800 854290** and we'll do our best to help.

### Brochure Accuracy

Although every effort has been made to ensure all rates and information in this brochure are accurate at time of going to print in February 2010, we cannot accept responsibility for any errors or omissions and reserve the right to vary, amend or cancel any of the arrangements featured in this brochure should we find such alterations necessary.

## ^ make every stay more rewarding

Nothing makes us happier than when a guest returns to us time and again. And so, to thank guests who come back regularly, we created Affinity.

It's a free-to-join loyalty club and as a member, you can enjoy a range of extra benefits and earn Affinity Points, which you can exchange for a host of rewards.

As a member of Affinity, you'll enjoy all these extra benefits...

- Priority check in – all we need is your signature
- Free wireless access as a non-resident at any Shire Hotel
- Automatic late check-out on Sundays
- Free rooms for children on weekend short breaks (exc. North Lakes and Solent)
- Online access to manage your account and how we communicate with you
- Exclusive offers and discounts

Earn points to exchange for your choice of reward

- Luxury weekend breaks
- Wines and Champagne
- Award-winning restaurant meals
- Deluxe bathrobes
- Midweek Spa treatments

To join Affinity call **0800 854 290** for your application form join online at [shirehotels.com](http://shirehotels.com) – just follow the Affinity links





shire  
hotels & spas



Small details. Big difference.

The Old Wine Warehouse, Larkhill Street, Blackburn BB1 5DF  
[shirehotels.com](http://shirehotels.com)